

All rights reserved by **CNH Industrial**.

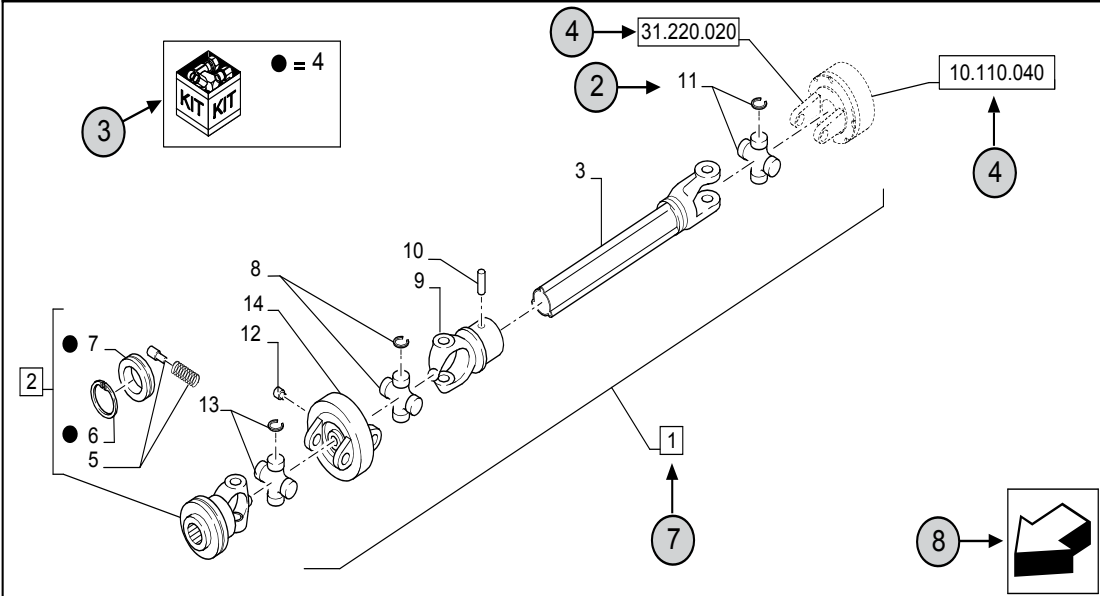
The information contained in this catalogue is intended to be of a general nature only. **CNH Industrial** may at any time and from time to time, for technical or other necessary reasons, modify any of the details or specifications of the product described in this catalogue.

To be sure of getting accurate, detailed and up-to-date information, an intending buyer should consult his nearest **CNH Industrial** dealer or distributor.

Single item numeration method used in this catalogue may not be used without written consent from **CNH Industrial**

31.220.010	01	p1	10/2014
------------	----	----	---------

VAR - 123782, 789101,987654 - PTO - D650



STANDARD ← 6

23	9	10	31.220.010	01	p1	10/2014
VAR - 123782, 789101,987654 - PTO - D650	11	12	13	14		

REF	FN	PART NUMBER	YR/SN	QTY	DESCRIPTION
1	1	86529340	20	1	SHAFT PTO, Incl 2 - 11
2	15	84014007		1	YOKE, Incl 4 - 7 ← 7
3	16	NSS		1	NOT SERVICED SEPARATELY, SHAFT, 350mm, Incl in 1
4		84004292		1	KIT, Seal Kit, Incl 6, 7 ← 17
4		{84058743}		1	KIT, Seal Kit, Incl 6, 7
2	18			21	
19				22	
1 = FOR ITALY ONLY ← 5					

MODELS ← 1


- 1 Model Number and Model Description
- 2 Reference - Figure call-out of the part number.
- 3 Parts supplied in repair kits per symbol reference.
- 4 

31.220.020

 Part illustrated on the **Page** or in the **Figure** indicated, or calls for **Variations** or **Details**. Indicates components shown in detail elsewhere in the catalogue under the figure number shown.
- 5 Footnote references
- 6 Figure notes
- 7 

1

2

 Includes item(s) ..... (See Description within partlist).
- 8 Orientation. (Arrow indicates front of the machine). 
- 9 Figure description.
- 10 General information of the figure.
- 11 Figure title number that aligns with the SRT. Standard Repair Time.
- 12 **Sequence** code within the assembly.
- 13 Page number within the sequence code.
- 14 **Date** of printing or updating of page (month-year).
- 15 **Note** - Relating to the Part Number. There is a key to symbols and abbreviations at the bottom of the text page.
- 16 Non-serviced parts.
- 17 Further description of the part to help confirm identification.
- 18 Not available as service part.
- 19 Part Number.
- 20 To be defined.
- 21 Total **Quantity** of the Part referred to in the page.  
The quantity can be replaced by the following indications:  
**AR** = quantity as requested.
- 22 Part **Description**.
- 23 Variant Codes

---

## TABLE OF CONTENTS

---

00.100.01		INITIAL STOCKING LIST
05.100.01		FILTERS, BOOMER 24
05.100.03	02	CAPACITIES, BOOMER 24
10.000.00		SECTION INDEX - ENGINE
10.001.AB		CYLINDER BLOCK & RELATED PARTS
10.001.AD		ENGINE OVERHAUL KIT
10.101.AA		CYLINDER HEAD & RELATED PARTS
10.101.AB		VALVE COVER & RELATED PARTS
10.102.AP		ENGINE OIL PAN
10.103.AA		CRANKSHAFT & PULLEY
10.103.AB		CRANKSHAFT HALF-BEARINGS
10.103.AH		FLYWHEEL ASSEMBLY
10.103.AK		FLYWHEEL HOUSING
10.103.AL		CRANKSHAFT OIL SEALS
10.105.AB		PISTON & CONNECTING ROD
10.106.AA		CAMSHAFT & RELATED PARTS
10.106.AO		ROCKER ARM. SHAFT & VALVES
10.108.AB		HOUR/TACHOMETER - DRIVEN UNIT
10.114.AL	01	TIMING & DRIVE GEAR HOUSING
10.114.AL	02	TIMING & DRIVE GEARS
10.202.AB		AIR CLEANER - AIR INTAKE PARTS
10.206.AP		FUEL FILTER & FUEL TRANSFER PUMP
10.216.AI		FUEL TANK & ASSOCIATED PARTS
10.218.AI		FUEL INJECTOR LINES
10.218.AQ	01	FUEL INJECTION PUMP ASSEMBLY
10.218.AQ	02	FUEL INJECTION PUMP ACCESSORIES
10.218.AQ	03	FUEL INJECTION PUMP SHAFT
10.220.AI		THROTTLE CONTROL
10.220.AM		GOVERNOR
10.242.01		FUEL SYSTEM - FUEL INJECTION PUMP
10.254.AC		EXHAUST MANIFOLD
10.254.AI		MUFFLER
10.254.AM		INTAKE MANIFOLD
10.304.AC	01	ENGINE OIL PUMP ASSEMBLY
10.304.AC	02	ENGINE OIL PUMP & LINES
10.304.AE		ENGINE OIL FILTER

---

## TABLE OF CONTENTS

---

10.304.AS		DIPSTICK & ENGINE OIL FILL TUBE
10.400.BE		RADIATOR & RELATED PARTS
10.414.01		COOLING SYSTEM
21.126.AB		SHIFT LEVER & FORK, RANGE GEAR
21.148.AC		RANGE GEAR & SHAFT
23.304.AJ		4WD SHAFT & GEARS
23.314.AG		FRONT & REAR 4WD SHAFT
25.100.AA		FRONT AXLE ASSEMBLY
25.100.AD		FRONT AXLE, HOUSING, GEARS & SUPPORT
25.102.AD		FRONT AXLE, DIFFERENTIAL
25.108.AG		STEERING KNUCKLE & KING PIN
25.310.AE		FINAL DRIVE, GEARS & SHAFT
27.106.AA		DIFFERENTIAL PINION SHAFT & GEARS
27.106.AL		DIFFERENTIAL LOCK PEDAL
27.124.AA		REAR AXLE SHAFTS
29.100.AI		HST CONTROL LINKAGE
29.100.AN	01	HST CONTROL LINKAGE - 2 PEDAL
29.100.AN	02	HST CONTROL LINKAGE - 2 PEDAL W/CRUISE CONTROL
29.202.AA		TRANSMISSION HOUSING
29.218.AA		HYDROSTATIC PUMP, MAIN SHAFT
29.218.AO	01	HYDROSTATIC PUMP - MAIN ASSEMBLY
29.218.AO	02	HYDROSTATIC PUMP - PUMP ROTATING COMPONENTS
29.218.AO	03	HYDROSTATIC PUMP - MOTOR ROTATING COMPONENTS
29.218.AO	04	HYDROSTATIC PUMP - SEALS AND GASKETS
31.220.AZ		MID PTO SHAFT & GEARS
31.220.BA		PTO GEAR SHAFT & GEARS
31.226.AA		HYDRAULIC PUMP DRIVE PTO
33.110.AJ		PARKING BRAKE, LEVER ASSY & KNOB
33.110.AX		BRAKES
33.120.AG		BRAKE, PEDAL, LEVER & BRACKET
35.100.AZ		PRIORITY VALVE BLOCK, VALVE & RELIEF VALVE
35.100.BI	01	HYDRAULIC LIFT - CYLINDER HOUSING
35.100.BI	02	HYDRAULIC LIFT - CYLINDER BREAKDOWN
35.100.BI	03	HYDRAULIC LIFT - LIFT ARMS & SHAFT
35.100.BI	04	HYDRAULIC LIFT - CONTROL LEVER
35.104.AA		HYDRAULIC PUMP, LINES & OIL FILTERS

---

**TABLE OF CONTENTS**

---

35.120.01	03	UPPER & LOWER LINK
35.120.02	01	LIFT ROD
35.204.BE		W/O REMOTE CONTROL VALVE
35.204.BE	01	PTO VALVE ASSEMBLY
35.359.AG		LIFT CYLINDER, CONTROL VALVE
37.100.AA		DRAWBAR AND HITCH
37.120.AF		CHECK LINK, CHAIN
39.100.AY		MAIN FRAME
41.101.AB	01	STEERING COLUMN, PUMP & WHEEL
41.101.AB	02	STEERING PUMP SEAL KIT
41.216.AN		STEERING CYLINDER & TIE ROD, FRONT
41.216.AV		STEERING CYLINDER LINES
44.511.AG		WHEELS, FRONT
44.520.AF		WHEELS, REAR
55.010.AG		GOVERNOR SOLENOID
55.012.AA		WATER TEMPERATURE SENDER & DRAIN PLUG
55.013.AB		ENGINE OIL SENDER & SWITCH
55.015.AJ		ELECTRICAL SWITCHES - HST MODELS
55.100.DP		WIRE HARNESSSES
55.201.AE		ENGINE STARTER MOTOR
55.202.AD		GLOW PLUG & SUPPORT BRACKET
55.301.AA		ALTERNATOR ASSY & BRACKET
55.302.AG		BATTERY - TRAY & CABLES
55.404.AQ		HEADLAMP ASSEMBLY
55.404.CL		TAIL LAMP ASSEMBLY
88.100.02		DIA KIT, W/REMOTE CONTROL VALVE - MT20116103
88.100.37	01	DIA KIT, TRACTOR, TOW HOOK
90.100.AH		INSTRUMENT PANEL
90.100.AU		HOOD ASSEMBLY
90.100.BB		HOOD SUPPORT
90.108.AB		DECALS - BRAND & MODEL
90.108.AC		DECALS - SAFETY & INFORMATIONAL
90.114.AQ		ROPS - FOLDING TOP
90.116.AC		REAR FENDER
90.118.AE		OPERATOR'S LADDER, STEP
90.118.CB		PLATFORM

---

## TABLE OF CONTENTS

---

90.120.AD	SEAT, NON-SUSPENSION
90.151.AN	CONSOLE, TRIM PANEL





---

## SECTION INDEX

### SERVICE & MAINTENANCE

---

00.100.01		INITIAL STOCKING LIST
05.100.01		FILTERS, BOOMER 24
05.100.03	02	CAPACITIES, BOOMER 24

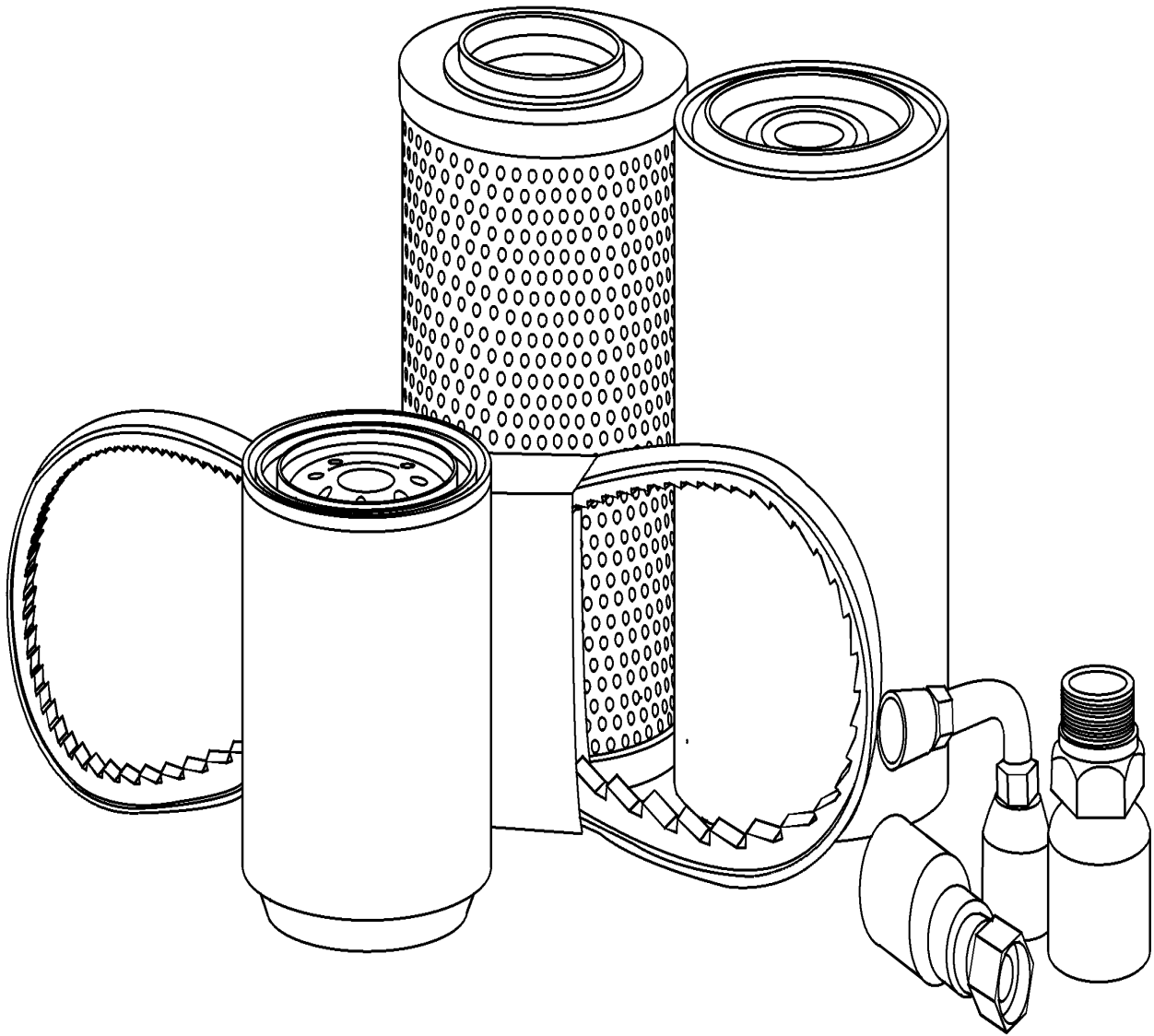


**00.100.01**

p1

9/2017

INITIAL STOCKING LIST



Verified by Engineering



## INITIAL STOCKING LIST

REF FN	PART NUMBER	YR/SN	QTY DESCRIPTION
1	MT40007122		RELAY 12V/40A/30A
2	MT40007191		RELAY 12V, 70A
3	MT40007202		BULB 12V, 21/5W
4	MT40007203		BULB 12V/23W
5	MT40007207		BULB 12V, 21W
6	MT40012887		MFD SWITCH 12V, 5A
7	MT40059362		BULB
8	MT40109136		SOLENOID
9	MT40109514		GLOW PLUG
10	MT40185307		SWITCH
11	MT40192381		RADIATOR HOSE
12	MT40192382		RADIATOR HOSE
13	MT40194054		FUEL GAUGE
14	MT40194373		SWITCH
15	MT40195597		SWITCH
16	MT40196911		FLASHER UNIT
17	MT40197104		DIPSTICK
18	MT40205592		HEADLAMP
19	MT40225132		THERMOSTAT
20	MT40225134		SENSOR
21	MT40225209		STARTER MOTOR
22	MT40229786		ALARM Buzzer
23	MT40230107		RELAY
24	MT40230238		COUPLING, QUICK, FEM 1/2"
25	MT40233022		COUPLING 3/8"
26	MT40242668		RADIATOR CAP
27	MT40256587		BULB 12V, 10W
28	MT40256735		LAMP 12V
29	MT40256736		LAMP 12V
30	MT40258187		SWITCH
31	MT40262395		IGNITION SWITCH
32	MT40266850		IGNITION KEY

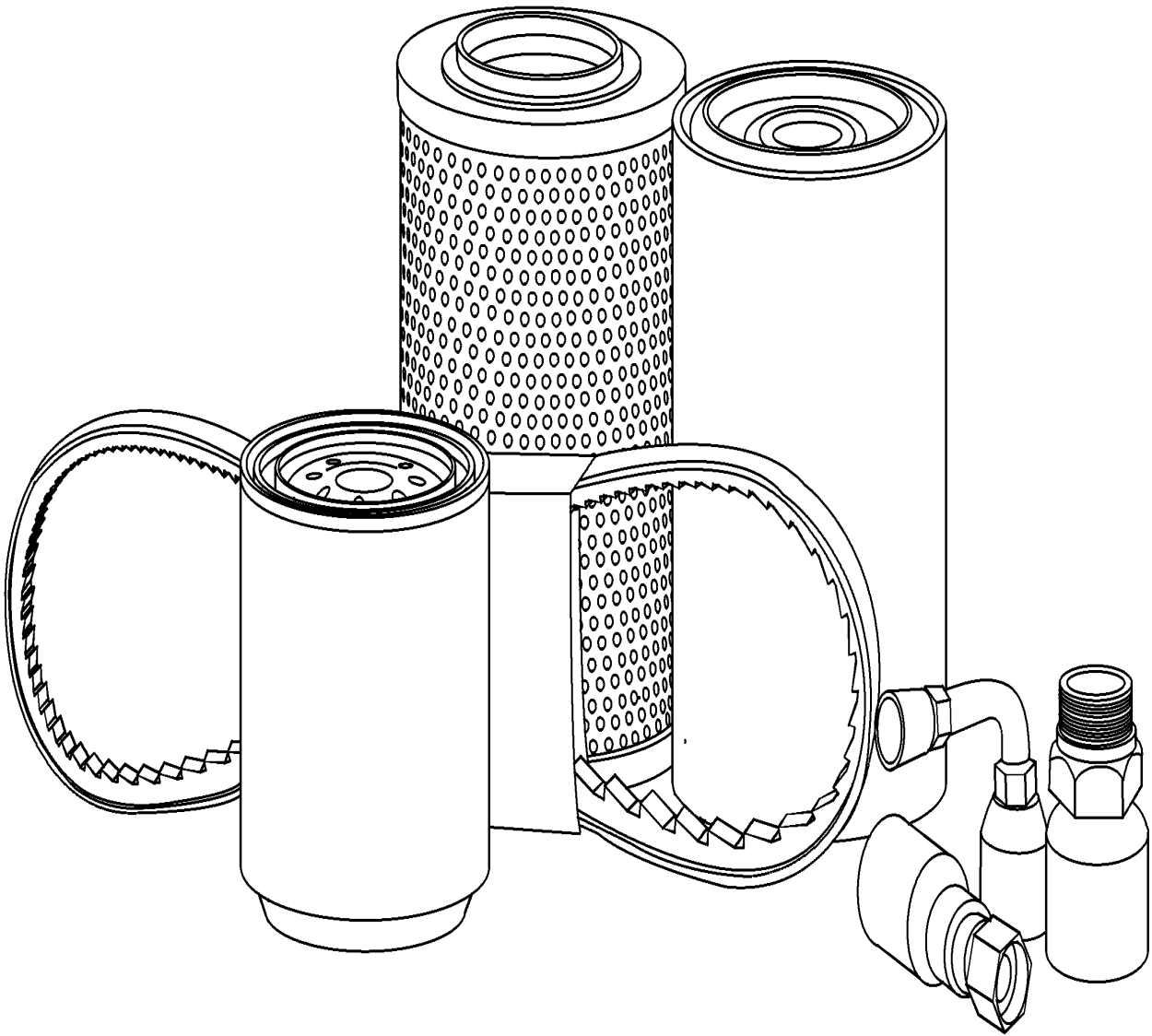
## BOOMER 24-COMPACT TRACTOR

**00.100.01**

p2

9/2017

INITIAL STOCKING LIST



Verified by Engineering



**00.100.01**

p2

9/2017

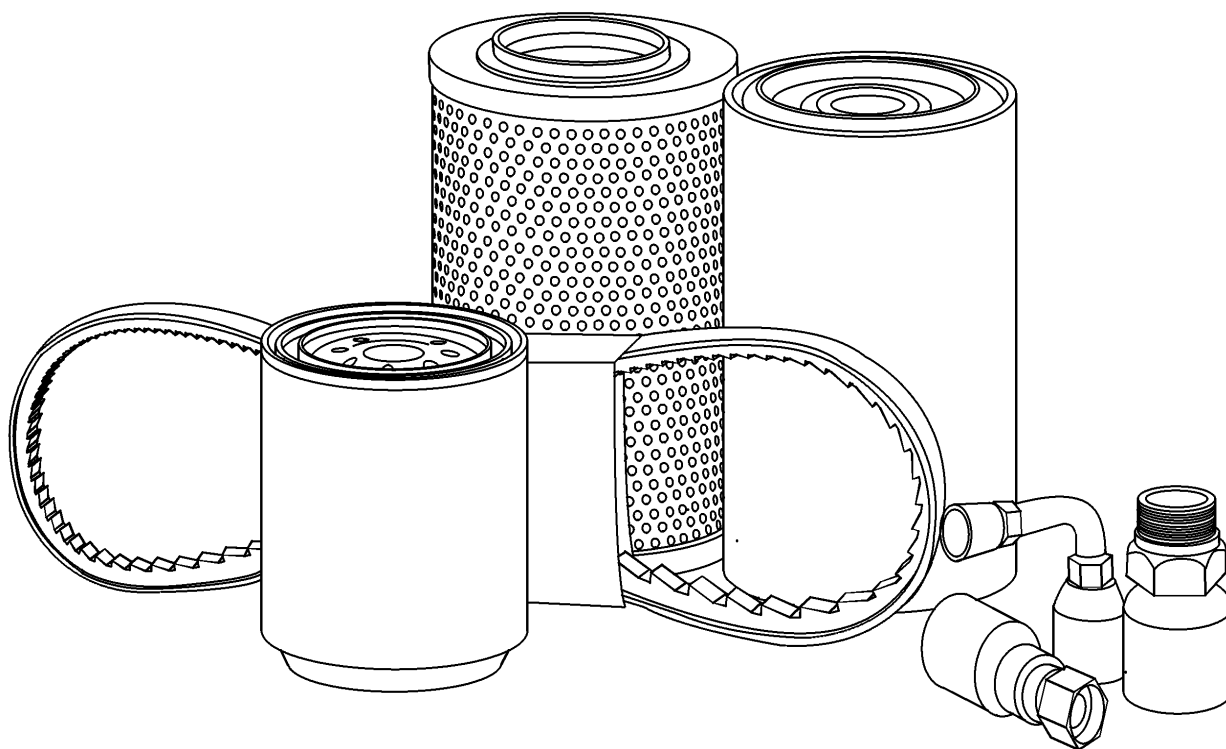
**INITIAL STOCKING LIST**

REF FN	PART NUMBER	YR/SN	QTY DESCRIPTION
--------	-------------	-------	-----------------

33	MT40286576		SEAL KIT
34	MT40289688		SEAL KIT

**BOOMER 24-COMPACT TRACTOR**

## FILTERS, BOOMER 24



Verified by Parts Engineering



**05.100.01**

p1

9/2017

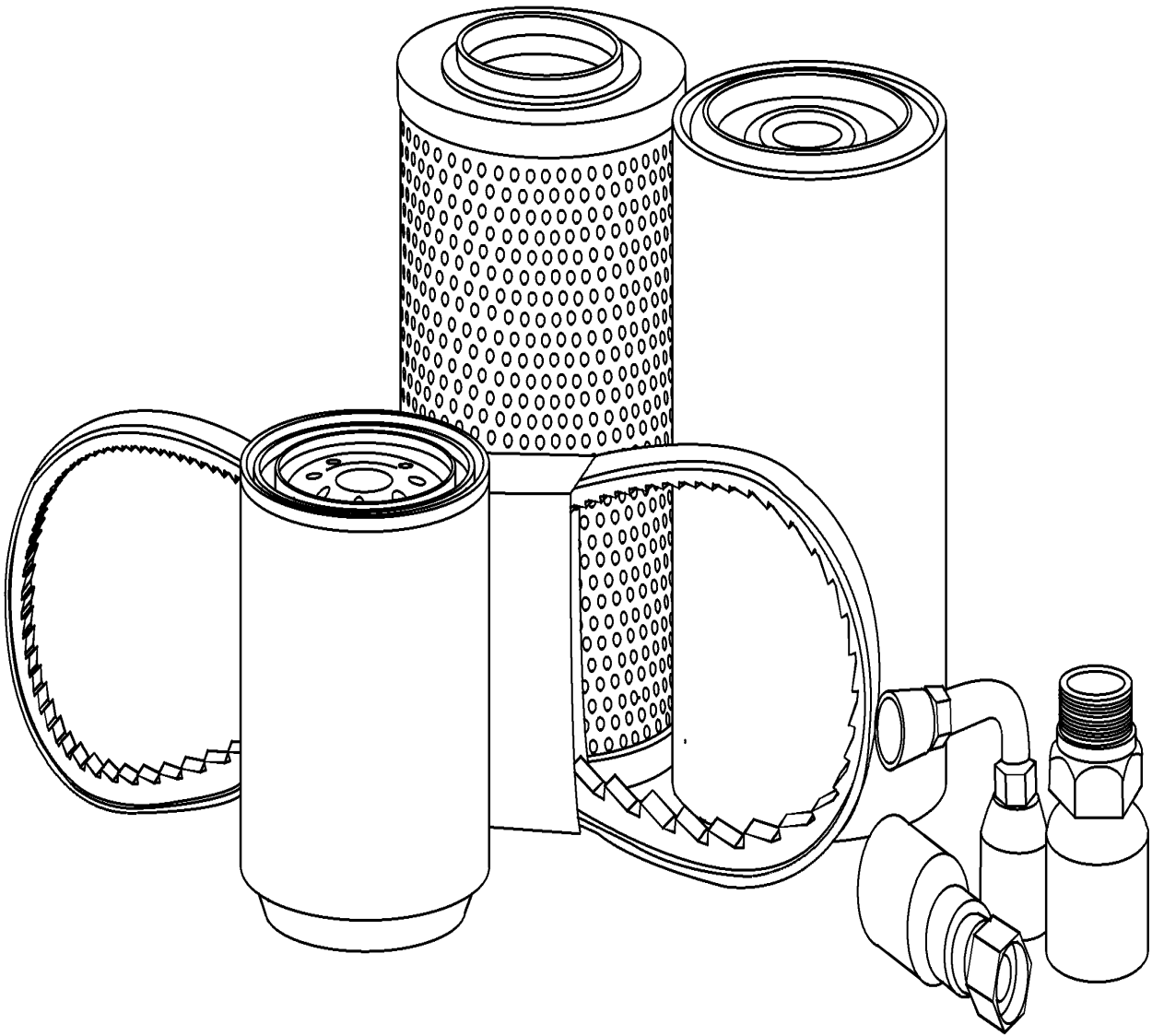
**FILTERS, BOOMER 24**

REF FN	PART NUMBER	YR/SN	QTY DESCRIPTION
1	MT40056451		1 ENGINE OIL FILTER
2	MT40049450		1 AIR FILTER
3	MT40220109		1 HYDRAULIC OIL FILTER
4	MT40195621		1 FILTER Hydraulic, Inline Suction
5	MT40207336		1 FUEL FILTER Assy
6	MT40223960		1 ELEMENT Fuel Filter
7	MT40008416		1 FILTER STRAINER

**BOOMER 24-COMPACT TRACTOR**



## CAPACITIES, BOOMER 24



Verified by Engineering



**05.100.03**

02

p1

9/2017

**CAPACITIES, BOOMER 24**

REF	FN	PART NUMBER	YR/SN	QTY DESCRIPTION
*		CNH XHD COOLANT		ANTIFREEZE Coolant, 0.98-Gal
*		M-GOLD SAE15W40		OIL Engine Crankcase, 1.01-Gal
*		MULTI G 134		OIL Hydraulic, 5.3-Gal
*		MULTI G 134		OIL Transmission, 5.3-Gal
*		HYPOIDE 80W90L		OIL Front Axle, 0.78-Gal
*		ZRG012WGC		GREASE Chassis Lube, NLGI #2 White Lithium, As Required

**BOOMER 24-COMPACT TRACTOR**

---

## SECTION INDEX

### ENGINE

---

10.000.00		SECTION INDEX - ENGINE
10.001.AB		CYLINDER BLOCK & RELATED PARTS
10.001.AD		ENGINE OVERHAUL KIT
10.101.AA		CYLINDER HEAD & RELATED PARTS
10.101.AB		VALVE COVER & RELATED PARTS
10.102.AP		ENGINE OIL PAN
10.103.AA		CRANKSHAFT & PULLEY
10.103.AB		CRANKSHAFT HALF-BEARINGS
10.103.AH		FLYWHEEL ASSEMBLY
10.103.AK		FLYWHEEL HOUSING
10.103.AL		CRANKSHAFT OIL SEALS
10.105.AB		PISTON & CONNECTING ROD
10.106.AA		CAMSHAFT & RELATED PARTS
10.106.AO		ROCKER ARM. SHAFT & VALVES
10.108.AB		HOUR/TACHOMETER - DRIVEN UNIT
10.114.AL	01	TIMING & DRIVE GEAR HOUSING
10.114.AL	02	TIMING & DRIVE GEARS
10.202.AB		AIR CLEANER - AIR INTAKE PARTS
10.206.AP		FUEL FILTER & FUEL TRANSFER PUMP
10.216.AI		FUEL TANK & ASSOCIATED PARTS
10.218.AI		FUEL INJECTOR LINES
10.218.AQ	01	FUEL INJECTION PUMP ASSEMBLY
10.218.AQ	02	FUEL INJECTION PUMP ACCESSORIES
10.218.AQ	03	FUEL INJECTION PUMP SHAFT
10.220.AI		THROTTLE CONTROL
10.220.AM		GOVERNOR
10.242.01		FUEL SYSTEM - FUEL INJECTION PUMP
10.254.AC		EXHAUST MANIFOLD
10.254.AI		MUFFLER
10.254.AM		INTAKE MANIFOLD
10.304.AC	01	ENGINE OIL PUMP ASSEMBLY
10.304.AC	02	ENGINE OIL PUMP & LINES
10.304.AE		ENGINE OIL FILTER
10.304.AS		DIPSTICK & ENGINE OIL FILL TUBE
10.400.BE		RADIATOR & RELATED PARTS

**Thanks very much for your reading,  
Want to get more information,  
Please click here, Then get the complete  
manual**

**JustClickHere** 

**NOTE:**

**If there is no response to click on the link above,  
please download the PDF document first, and then  
click on it.**

**Have any questions please write to me:  
[admin@servicemanualperfect.com](mailto:admin@servicemanualperfect.com)**